

Patient Warming

VETERINARY PATIENT WARMING

Why is patient warming important?

81% of Hypothermia in the first hour of anaesthesia and surgery is due to temperature redistribution. Pre-warming a patient prior to anaesthetising them will help to maintain normothermia and diminish the effects of heat redistribution.



Induction of Anaesthesia

Vasodilation allows warmer blood from the core to cool as it flows through the periphery which lowers the body temperature.



Prewarmed Patient

Prewarming before surgery increases the peripheral temperature, so the blood's rate of cooling is reduced.

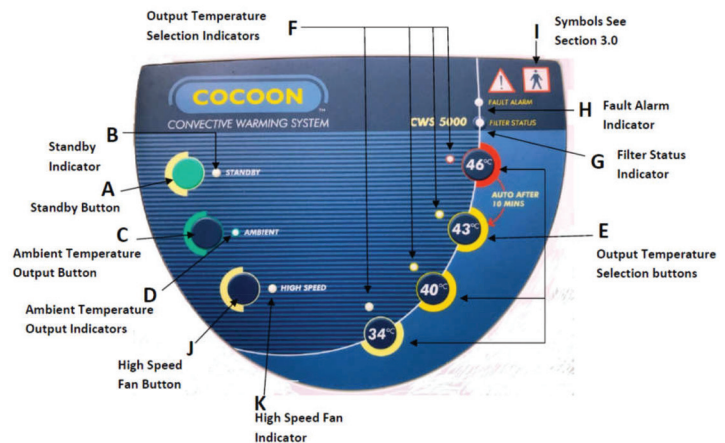
Hypothermia causes the following problems:

- 1) Patients take longer to recover from anaesthesia.
- 2) Increases the chance of post-operative infection in the surgical wound due to reduced tissue perfusion (blood circulation) and reduced immune function.
- 3) Impairs the immune function as well as the 'killing' ability of Neutrophils (white blood cells).
- 4) Reduced myocardial (heart muscle) function, which can lead to decreased cardiac output, reduced blood pressure, bradycardia (slow heart rate) arrhythmias (irregular heart beats) or fibrillation (fluttering heart muscle) which can lead to death.
- 5) Can lead to patient overdose of inhalant gasses due to reduced ability of the liver to metabolise the anaesthetic drugs.
- 6) Shivering post-op, which leads to increased pain at the surgical site as well as increasing the oxygen demand. This increased demand for oxygen as well as the depressed respiratory system can lead to hypoxemia (oxygen deficiency in arterial blood) which can lead to hypoxia (oxygen deficiency in tissues) and both conditions are dangerous to the patient.

Normothermia (normal temperature range) maintains a stable patient metabolism, immune system and heart function. Normothermia also plays a vital role regarding maintaining a stable and safer anaesthetic.



CONVECTIVE PATIENT WARMING SYSTEM



The Cocoon Convective Patient Warming System includes a micro processor controlled 5000 warming machine and a full range of Cocoon Warming Blankets to suite various applications. The Cocoon exceeds essential regulatory standards.

Catalogue is unpriced, talk to your area rep about online access to pricing.



PATIENT WARMER



222 248 – COCOON MACHINE
\$2,350.00

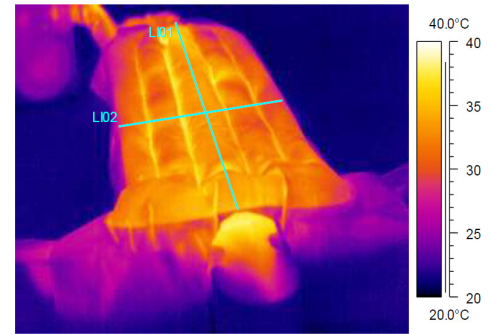
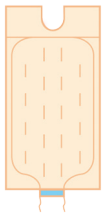


fig 1.

Features of the Cocoon Patient Warmer:

- 1) Light, compact, sturdy and user friendly.
- 2) Designed to be fluid resistant and the vents are designed for protection against fluids.
- 3) Quiet operation (approximately 50db).
- 4) Pole-mount and retractable bed-mount attachments.
- 5) Boost button of 46 degrees for 10 minutes.
- 6) Improved infection control with 0.2micron Hepa Filters – last up to 1,000hours
- 7) The filter is placed closest to the outlet which ensures only the cleanest air is delivered to the patient, can be used on the floor as side vented.
- 8) Filter status indicator.
- 9) Wipable and washable protective hose cover.
- 10) 6 - 10 year life.
- 11) 2 year warranty
- 12) Two independent thermostats set to 53 degrees - impossible to burn a patient
- 13) Greater temperature range.
- 14) Safety timer.
- 15) External testing port.

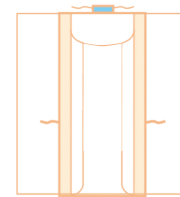
DISPOSABLE BLANKETS



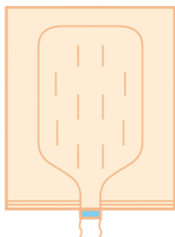
222 249 – Blanket
100 x 195cm
\$21.35
each



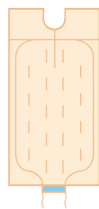
222 252 – Air Sock
12 x 100cm
\$21.35
each



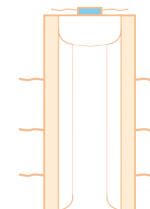
222 256 – Tube
55 x 117cm
\$21.35
each



222 250 – Blanket
100 x 120cm
\$21.35
each



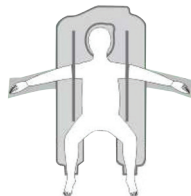
222 253 – Cardiac
access
100 x 195cm
\$21.35
each



222 255 – Tube
100 x 217cm
\$54.95
each



222 251 – Blanket
59 x 87cm
\$21.35
each



222 257 – Underbody
90 x 169cm
\$59.95
each

Cocoon blankets are:

- Soft, lightweight non-woven fabric that is durable and water resistant.
- Known to be used up to 30 times.
- Universal inlet port ties to ensure the hose remains firmly attached to the blanket and can be removed and replaced easily.
- Extra fabric along the edges for improved patient warming and cover as extra fabric holds down edges.
- White side micro-pores provide even heat distribution through out the entire blanket (fig 1).

Prices do not include GST.
Freight free into clinic, small order charge applies to orders less than \$50.00.

Contact Us

Customer Service
0800 800 801
Fax: 0800 264 625

Shoof International Ltd
PO Box 522,
Cambridge 3450